



Unit A3

Lady Victoria Business Centre

Newtongrange

EH22 4QN

Call us on 0131 454 9998

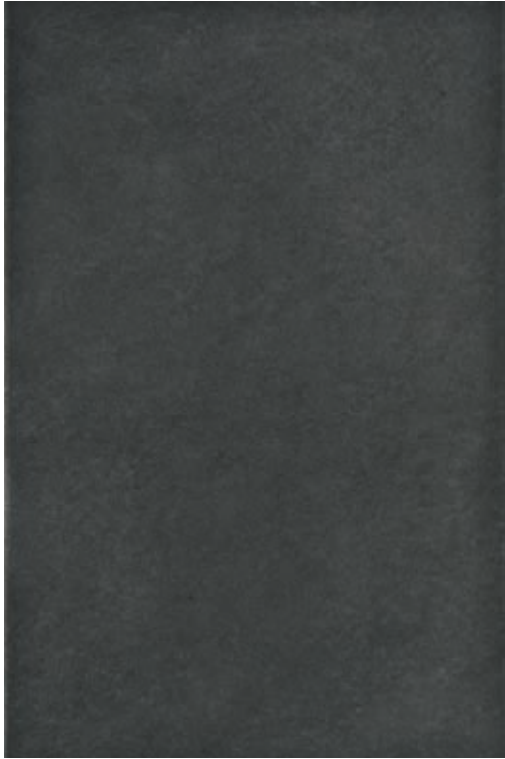
or email us at info@oraceramics.com

living

LIVING ANTRACITE 33x50 . 13"x20" · 33x33 . 13"x13"



 9 mm



ANTRACITE
33x50 . 13"x20"

37

 8 mm



ANTRACITE
33x33 . 13"x13"

34

 9 mm



GRIGIO
33x50 . 13"x20"

37

 8 mm



GRIGIO
33x33 . 13"x13"

34



BEIGE
33x50 . 13"x20"

37



BEIGE
33x33 . 13"x13"

34



ALMOND
33x50 . 13"x20"

37



ALMOND
33x33 . 13"x13"

34



PERLA
33x50 . 13"x20"

37



PERLA
33x33 . 13"x13"

34



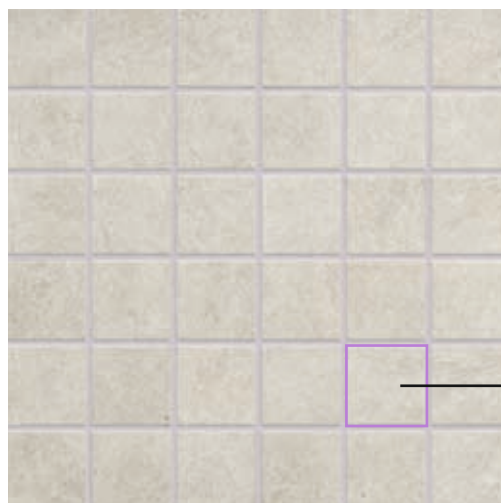
TABACCO
33x50 . 13"x20"

37



TABACCO
33x33 . 13"x13"

34



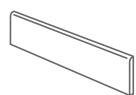
5x5 . 2"x2"

***PERLA MOSAICO**
33x33 . 13"x13"

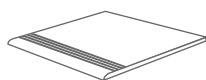
99

*DISPONIBILE IN TUTTI I COLORI
AVAILABLE IN ALL THE COLORS
DISPONIBLE DANS TOUTES LES COULEURS
IN ALLEN FARBEN ERHÄLTICH

↓ PEZZI SPECIALI . SPECIAL PIECES . PIÈCES SPÉCIALES . FORMTEILE



***BATTISCOPA**
8x33 . 3¹/₄"x13" **109**
9x50 . 3³/₄"x20" **115**



***GRADINO STEP**
33x33 . 13"x13" **116**

*SU RICHIESTA
ON REQUEST
SUR DEMANDE
AUF ANTRAG

↓ IMBALLI E PESI . PACKING AND WEIGHTS . EMBALLAGES ET POIDS .
VERPACKUNG UND GEWICHTE

FORMATO SIZE . FORMAT . FORMAT	PCS	MQ	KG	BOX	KG
33x50	8	1,32	25,00	40	1020,00
33x33	14	1,50	23,10	46	1082,60
33x33 MOSAICO 5x5	9	1,00	8,10	30	263,00
8x33 BATTISCOPA	50	-	27,10	-	-
9x50 BATTISCOPA	20	-	21,20	-	-
33x33 GRADINO STEP	16	-	26,40	-	-